

VEHICLE Nissan Navara NP300
PRODUCT Headlight Level Extension Bracket
PART NUMBER SB065

TOOLS REQUIRED
General hand tools

The Nissan Navara headlight extension bracket is designed to correct the ratio of travel for lifted vehicles to correct headlight adjustment & minimise the potential of damaging the original system.

The heights marked on the bracket are a guide relating to the vehicle's suspension lift and are for reference only.

Throughout the fitment process, you may need to move the OE linkage to a higher or lower setting to ensure the least amount of stress is applied to the factory components. The goal is to prevent any bind or overextending which could result in a component failure.

1. Remove linkage and original bracket from axle housing.
See figure 1.

2. Fit bracket with existing and supplied M8 bolts.

3. Loosen M8 bolt on handbrake cable retainer.

4. Slide gusset bracket into location.

5. Fit supplied M6 bolt and nut through both brackets and tighten all hardware.
See figure 2.

6. Fit leveling linkage into bracket in appropriate numbered location.

7. Cycle through full suspension travel to ensure the linkage and bracket don't foul or have any excess stress.
See figure 3.



FIGURE 1



FIGURE 2

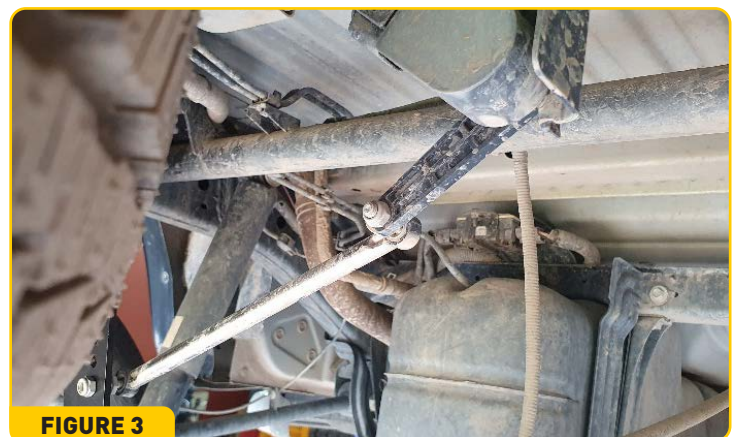


FIGURE 3