



RPHILALL RECOVERY POINT FITTING INSTRUCTIONS

N70 & N80 Fitment.....	2
N70 With Xrox Bull Bar Fitment	3
N80 Genuine Bull Bar Fitment	5



VEHICLE Toyota Hilux N70 & N80 2005 - Current

PRODUCT Recovery Point

PRODUCT CODE RPHILALL

NOTE As this Recovery Point is designed to fit a range of bull bar applications, the required hardware will vary accordingly.

STANDARD FITMENT

DURING RECOVERY ALWAYS USE BOTH RECOVERY POINTS

THIS REDESIGNED RECOVERY POINT IS DESIGNED TO FIT ALL FACTORY N70 AND N80 TOYOTA HILUX'S, AS WELL AS A RANGE OF BULL BAR APPLICATIONS. EACH BULL BAR APPLICATION WILL BE SLIGHTLY DIFFERENT AND MAY REQUIRE THE MODIFICATION OF BRACKETS AND OTHER COMPONENTS.

1. Remove bull-bar wing under trays and centre tray.
2. Identify the location of the recovery point and which application will suit installation.
3. Once the specific application for your vehicle has been confirmed, mark and remove the factory front tow hooks. Remember to rust protect and paint any bare metal surfaces.
See figure 1.
4. Fit RP-HILALL into position and loosely secure in place using a minimum of 2 x M12x 100mm bolts and crush tubes through the middle holes in the chassis rail.
See figure 2.
5. Loosely fit the 2 x M10 Bolts and Nylocs where the front plate of the recovery point meets the front of the chassis rail.
See figure 3.
6. Loosely fit the rear most M12 x 40mm bolt through the recovery point into the captive nut in the chassis rail.
See figure 3.
7. Tighten all bolts evenly and then to the recommended torque specs.



Figure 1



Figure 2



Figure 3

BOLT TORQUE SPECS

	8.8	10.9	12.9
M10	41-60Nm	59-85Nm	65-94Nm
M12	71-105Nm	102-150Nm	114-164Nm
M14	112-168Nm	161-240Nm	182-265Nm
M16	175-260Nm	250-371Nm	282-406Nm

VEHICLE Toyota Hilux N70 2005 -2014 - Xrox Bull Bar

PRODUCT Recovery Point

PRODUCT CODE RPHILALL

NOTE As this Recovery Point is designed to fit a range of bull bar applications, the required hardware will vary accordingly.

XROX BULLBAR FITMENT

DURING RECOVERY ALWAYS USE BOTH RECOVERY POINTS

THESE INSTRUCTIONS ARE FOR FITMENT OF RPHILALL TO A HILUX N70 FITTED WITH AN XROX BULL BAR

Hardware utilized for fitment to a Hilux N70 fitted with an Xrox Bull bar:

- 4 x M12*1.25*100mm
- 2 x M12*1.25*40mm
- 4 x M10*1.25*40mm
- 10 x M12 Washer
- 6 x M10 Washer
- 4 x M10 Custom Washer
- 4 x M12*1.25 Nyloc
- 4 x M10*1.25 Nyloc

1. Remove bull-bar wing under trays and centre tray.

2. Using angle grinder or similar, Mark and remove the factory front tow hooks.
See figure 1.

3. The following modifications to the bull bar bracket are required:

- Trim the lower section of the bulbar bracket approximately 30mm upwards to allow the recovery point to sit flush against the bull bar bracket.
- The Two middle holes will need to be modified. The forward most hole will need to be opened to suit an M12 bolt.
- The rear most hole will need to be added, drilling from the inside, using the hole in the chassis rail as a guide, drill a hole through the bulbar bracket to suit an M12 bolt.
See figure 2.

4. The front bulbar bracket will also need to be drilled using the hole in the chassis rail end as a guide.
See figure 3.



Figure 1

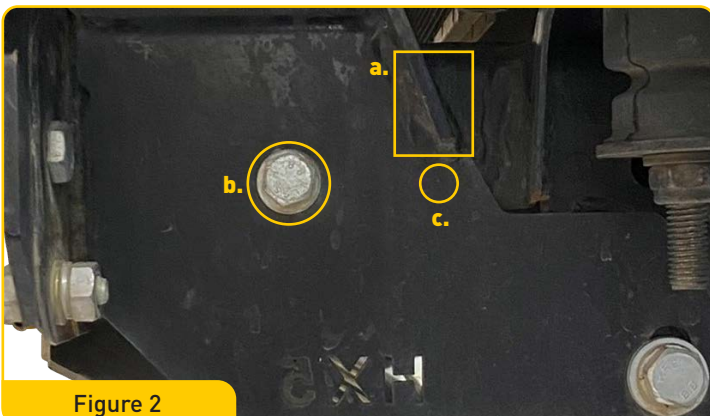


Figure 3

XROX BULLBAR FITMENT

DURING RECOVERY ALWAYS USE BOTH RECOVERY POINTS

THESE INSTRUCTIONS ARE FOR FITMENT OF RPHILALL TO A HILUX N70 FITTED WITH AN XROX BULL BAR

5. Clean up any exposed metal and rust protect.
See figure 4.
6. Fit RPHILALL into position and loosely secure in place using 2 x M12 x 100mm bolts and crush tubes through the middle holes in the chassis rail.
See figure 5.
7. Loosely fit the 2 x M10 Bolts and Nylocs where the front plate of the recovery point meets the front of the chassis rail.
See figure 6.
8. Loosely fit the rear most M12 x 40mm bolt through the recovery point into the captive nut in the chassis rail.
See figure 6.
9. Tighten all bolts evenly and then to the recommended torque specs.



Figure 4

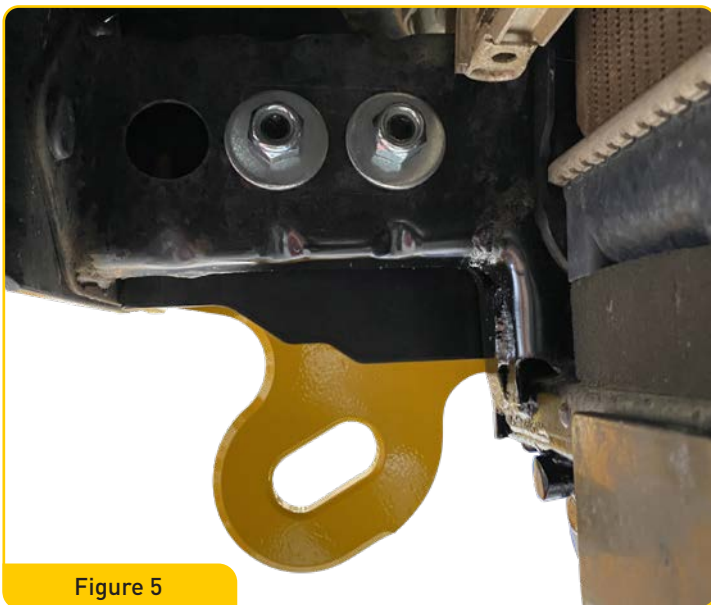


Figure 5

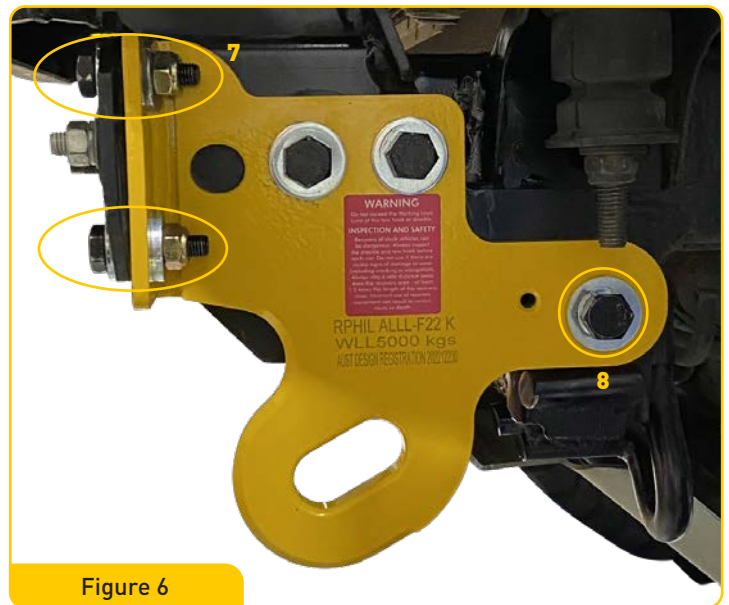


Figure 6

VEHICLE Toyota Hilux N80 - Genuine Bull Bar

PRODUCT Recovery Point

PRODUCT CODE RPHILALL

NOTE As this Recovery Point is designed to fit a range of bull bar applications, the required hardware will vary accordingly.

GENUINE N80 BULLBAR FITMENT

DURING RECOVERY ALWAYS USE BOTH RECOVERY POINTS

THESE INSTRUCTIONS ARE FOR FITMENT OF RPHILALL TO A HILUX N80 FITTED WITH A GENUINE BULL BAR

1. Remove Latitudinal Reinforcement Wing Bracket.

See Fig. 1

2. Remove Longitudinal Reinforcement Bracket from the car circled in Figure 2 and discard as this is not used.

See Fig. 2

3. Replace the Longitudinal Reinforcement Bracket with the RPHILALL tow point. This now takes place of the bracket that was discarded.

See Fig. 3



Figure 1

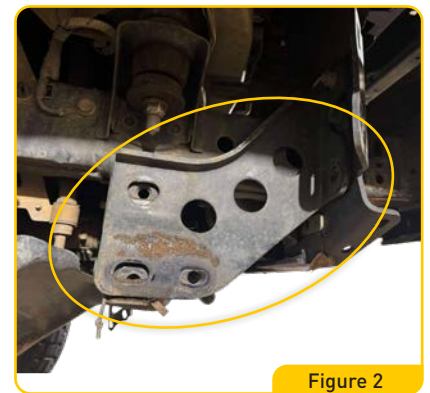


Figure 2

- 4a. On the Latitudinal Reinforcement Wing Bracket remove the top spacer on the bracket. A hammer can be used to knock the spacer off as it is only tack welded in place.

See Fig. 4

- 4b. This is now used on the bottom hole as a spacer circled in figure 4 and 5 (spacer shown in Square).

See Fig. 4 & Fig. 5

5. Re-install Latitudinal Reinforcement Wing Bracket back on car with spacer in its new location.

See Fig. 5

6. Loosely do all bolts up in position.

See Fig. 6

7. Once everything is in position, tighten all bolts evenly and then to recommended torque spec.

8. Installation complete.

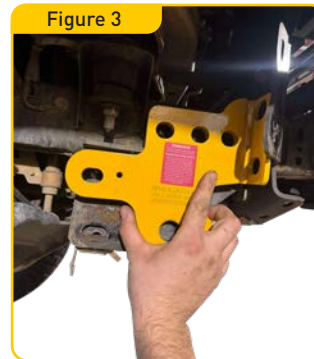


Figure 3



Figure 4



Figure 5



Figure 6