

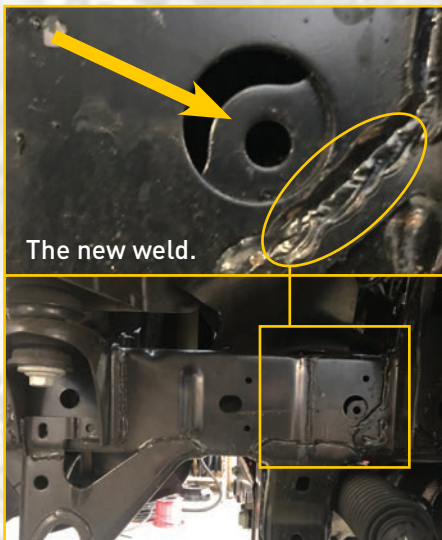
# RP-RAN02 TOW POINT INSTALLATION

Compatible with FORD PX3 RANGER & EVEREST 06/2018-0N

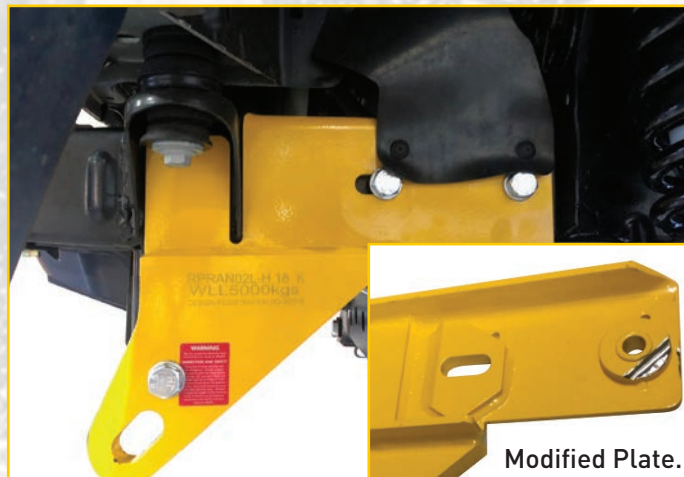


Applicable to vehicles manufactured post JUNE 2018. A stiffening plate installed inside the chassis rail affects access to one hole used in the fitment of RP-RAN02 (Refer Image). Using a step drill enlarge this hole to allow fitment of the supplied hardware. The spacer pictured will require modification to clear the new weld not present on previous vehicles.

The nut plate will sit behind the stiffening plate, with the bolt passing through.



The new weld.



Modified Plate.

PART NUMBER	BARCODE
BT106_BLACK	9333189224822

\*Suppliers/brands are for reference purposes only.

