

# RP-PAT04 FITMENT GUIDE & INCLUSION SHEET



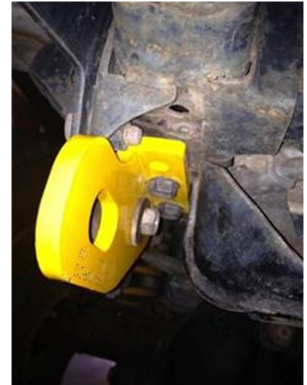
Ensure all supplied and specified components are used during the installation of tow recovery points, Failure to do so will significantly reduce the Working Load Limit (WLL) specified for each individual point, which can result in serious injury or death.

## Fitted to GU Patrol series 3 onwards –

Each side uses 2 x M14x1.5mm (Vertical plane into the chassis) Hi tensile bolts supplied, and one factory bolt into the side profile as pictured.

Passenger side requires 2 nuts on wires (supplied) to be installed into the chassis rail, this will require the bumper/bull bar to be removed on some models, Check your chassis before fitment.

Ensure 3 bolts per tow point are fitted and torqued to recommended settings to ensure tow points meet tested standards.



## Fitted to 80" & 105" Toyota Land Cruisers—

105" Land Cruiser requires 4 x M12 x 1.25 bolts

100" Land Cruiser requires 4 x M14x 1.5 bolts

80" Land Cruiser requires 4 x M12 x 1.25 bolts

All models have nuts retained in chassis, ready for fitment, 2 bolts per side as supplied, can be mounted to front or rear of vehicle.

Ensure 2 bolts per tow point are fitted and torqued to recommended settings to ensure tow points meet tested standards.



## Fitted to D40 Navara—

Fitted to factory retained nuts on L/H side

M12 x 1.25 Hi tensile Bolts and retained nuts supplied for R/H side

Ensure 2 bolts per tow point are fitted and torqued to recommended settings to ensure tow points meet tested standards.

2 bolts per side as supplied, can be mounted to front or rear of vehicle.



### Bolt Torque Specs

	8.8	10.9	12.9
<b>M10</b>	41-60 Nm	59-85 Nm	65-94 Nm
<b>M12</b>	71-105 Nm	102-150 Nm	114-164 Nm
<b>M14</b>	112-168 Nm	161-240 Nm	182-265 Nm
<b>M16</b>	175-260 Nm	250-371 Nm	282-406 Nm

### Hardware supplied with RP-PAT04

4 x M14 x 1.5 Bolts—Nissan Patrol/100" IFS Land Cruiser  
 2 x M14x1.5 Nuts on wires—Nissan Patrol L/H Chassis  
 4 x M12 x 1.25 Bolts—Toyota Land Cruisers & Nissan Navara D40  
 2 x M12 x 1.25 Nuts on wires—Nissan Navara D40